



Zhengzhou Toper Industrial Equipment Co., Ltd
Add: No.101, Nanyang Road, Zhengzhou City, Henan Province, China
Tel: 0086-371-63758707 Fax: 0086-371-63720313
Email: toperkey@hi-tooper.com

Crusher



1 Gyration Crusher

Gyrating crusher is used in crushing cone within the cone cavity shell of materials, spinning back movement produced extrusion, fracturing and bending role, crushing various hardness ore or rock large crushing machinery. Equipped with broken cone in the top of the bearing spindle central crossbar, within bushing is placed in the bottom hole. The eccentric 101 Collar turns, broken lines around the machine for cone eccentric spinning back sports its broken movement is the continuation of, so work efficiency than jaw crusher. Large gyrating crusher already can handle material 5000 tons per hour, the biggest feeding diameter up to 20 mm.

Gyrating crusher use two ways to realize discharging mouth adjustment and overload insurance: one is to adopt the mechanical approach, the spindle top have adjust nut, rotate adjustment nuts, broken down or cone can rise, make



Zhengzhou Toper Industrial Equipment Co., Ltd
 Add: No.101, Nanyang Road, Zhengzhou City, Henan Province, China
 Tel: 0086-371-63758707 Fax: 0086-371-63720313
 Email: toperkey@hi-toper.com

discharging mouth then bigger or smaller, when overload, depend on the pulley cut drive to achieve insurance; insurance pin the second is hydraulically and hydraulic spinning back crusher, its spindle is located in hydraulic cylinder fortress, change the column in the hydraulic oil plunger volume can change crushing cone fluctuation position, thus changing the size of discharging port. Overload, spindle downward pressure increases, forcing the hydraulic oil plunger into hydraulic transmission system, make the accumulator to increase with the decrease of crushing cone from discharging mouth, with the raw material entered into the crushing chamber broken objects (such as iron, wood, in order to achieve insurance.)

Technical parameters:

Specification	Size of feed inlet (mm)	Feed size(mm)	Max feed size (mm)	Width of feed inlet (mm)	Processing capacity (t/h)
WGPXZ 0506	500	60	420	60~75	140~170
WGPXZ 0710	700	100	580	100~130	310~400
WGPXZ 0909	900	90	750	90~120	380~510
WGPXZ 0913		130		130~160	625~770
WGPXZ 0917		170		170~190	815~910
WGPXZ 1216	1200	160	1000	160~190	1250~1480
WGPXZ 1221		210		210~230	1560~1720
WGPXZ 1417	1400	170	1200	170~200	1750~2060
WGPXZ 1422		220		210~230	2160~2370
WGPXZ 1618	1600	180	1350	180~210	2400~2800
WGPXZ 1623		230		210~240	2800~3200
WGPXQ 0710	700	100	580	100~120	200~240
WGPXQ 0913	900	130	750	130~150	350~400
WGPXQ 1215	1200	150	1000	150~170	720~815



Zhengzhou Toper Industrial Equipment Co., Ltd
Add: No.101, Nanyang Road, Zhengzhou City, Henan Province, China
Tel: 0086-371-63758707 Fax: 0086-371-63720313
Email: toperkey@hi-toper.com



2 Jaw Crusher

Jaw crusher is mainly used in all kinds of ores and medium size large materials, can be broken the compressive strength is not more than 320Mpa materials, coarse and fine broken break point two. This series of jaw broken the product specification is complete, the feeding for 125mm ~ 750mm size, is the primary crushing the preferred equipment. The coarse broken jaw crusher is widely used in mining, metallurgy, building material, highway, railway, water conservancy and chemical industry, etc.

Jaw crusher application environment: it would be enormous rocks break into small stones in the process, the first line of crusher is often called "the Lord" crusher. For jaw broken feed, material from the top entrance into the crushing chamber containing jaw teeth. Jaw teeth in a huge strength to chamber wall material, squeeze into smaller the broken boulders. Support the jaw teeth movement is a root partiality axis, the shaft throughout the fuselage architecture. Eccentric sports usually ends by fixed in shaft generated by the flywheel. The flywheel and eccentric support bearing often use of spherical roller bearing, bearing is demanding work environment. Bearing must bear huge impact load, abrasive sewage and high temperature. Although the working environment is very strict, coarse broken jaw crusher still need very working reliably, this is to guarantee a key link in production efficiency.



Zhengzhou Toper Industrial Equipment Co., Ltd

Add: No.101, Nanyang Road, Zhengzhou City, Henan Province, China

Tel: 0086-371-63758707 Fax: 0086-371-63720313

Email: toperkey@hi-toper.com

Jaw crusher work principle: jaw crusher structure mainly frame, eccentric shaft, large pulleys, flywheel, dynamic jaw, side guard board, elbow board, elbow board the backseat, adjustable gap screw, reposition spring, fixed jaw plate and activities, including the composition such as jaw plate elbow board has also played insurance effect. This series of jaw crusher broken JiYaXing way bent, motor drive belt move by partiality axis and pulley to move jaw movement up and down, when moving jaw rises cubits board and dynamic jaw Angle change, making between dynamic jaw plate to push set jaw plate close, meanwhile materials run by extrusion, rolling, after crushing; When moving downward, cubits jaws moving jaw Angle between the plate and in smaller, move jaw plate under the effect of lever and spring from the root jaw plate, right now has broken material from crushing cavity mouth eduction, along with the motor turns continuously make periodic motor jaw broken crush and discharging, realize the crushing material batch production.

Jaw crusher performance features:

1. Crushing cavity deep and no dead zone, improve the feeding capacity and output;
2. The thick broken jaw crusher big crushing ratio, the product of granularity;
3. Gasket type discharging mouth adjusting devices, reliable convenient, wide adjustment, increased equipment flexibility;
4. Lubrication system safety and reliable, easy replacement of parts, maintenance workload is small;
5. The jaw broken equipment simple structure, reliable work, operation cost is low.
6. The saving-energy equipment: single 15% ~ 30% energy, more than doubling system energy saving;
7. The jaw crusher discharging mouth adjustment range of big, can satisfy different user requirements;
8. This product low noise, little dust.

Technical Parameters

Model	Feeding size (mm)	Max size(mm)	Adjusting range of discharging size(mm)	Production(t/h)	Motor power (kw)	Dimensions(mm)	Weight(t)
PE-150×250	150×250	125	10-40	1-5	5.5	670×820×760	0.81
PE-150×750	150×750	125	10-40	5-16	15	1050×1490×1055	3.8
PE-250×400	250×400	210	20-60	5-20	15	1160×1300×1240	2.8
PE-400×600	400×600	340	40-100	16-65	30	1480×1710×1646	6.5
PE-500×750	500×750	425	50-100	45-100	55	1700×1796×1940	10.1
PE-600×900	600×900	500	65-160	50-120	75	2235×2269×2380	15.5



Zhengzhou Toper Industrial Equipment Co., Ltd

Add: No.101, Nanyang Road, Zhengzhou City, Henan Province, China

Tel: 0086-371-63758707 Fax: 0086-371-63720313

Email: toperkey@hi-toper.com

PE-750×1060	750×1060	630	80-140	52-180	110	2430×2302×3110	28
PE-900×1200	900×1200	750	95-165	140-450	130	3789×2826×3025	50
PE-1000×1200	1000×1200	850	100-235	315-550	130	3889×2826×3025	57
PE-1200×1500	1200×1500	1020	150-300	400-800	160	4590×3342×3553	100.9
PEX-250×750	250×750	210	25-60	15-30	22	1750×1500×1420	4.9
PEX-250×1000	250×1000	210	25-60	16-52	30	1940×1650×1450	6.5
PEX-250×1200	250×1200	210	25-60	20-60	37	1940×1850×1450	7.7
PEX-300×1300	300×1300	250	25-100	20-90	75	2285×2000×1740	11



3 Cone Crusher

Spring cone crusher cavity system using the hydraulic qing reduced downtime, and each specifications of the crusher cavity type more users can select different according to different needs of cavity type, to better adapted to user needs. Apply to all kinds of crushing medium above hardness ore and rock. Has the structure and reliable, high production efficiency, easy to adjust, the use of economic etc. Characteristics. Its spring insurance system is overload protection device, can make the metal object crushing cavity and not harm by machine, using dry oil or water two sealing form, make limestone and lubricant isolation, to ensure reliable work. By crushing cavity type ore USES decision,



Zhengzhou Toper Industrial Equipment Co., Ltd

Add: No.101, Nanyang Road, Zhengzhou City, Henan Province, China

Tel: 0086-371-63758707 Fax: 0086-371-63720313

Email: toperkey@hi-toper.com

standard suitable for crushing; Medium applies to finely; Short head type used in finely.

Spring cone crusher work features: spring cone crusher work part is two section head cone, a is scheduled cone (also called the cone), and the other is moving cone (also called cone) within. Work basically has the following three features:

- 1) moving cone turns continuously. Material unloading process fracture process and continuous alternately along the working surface of productivity high t.
- 2) between the two cone material clip, by extrusion, bending and shear function, the broken easier Qiao consumption, low power.
- 3) the granularity of product is evener, a cube shape dynamic cone work surfaces wear also relatively homogeneous.

Spring cone crusher performance characteristics: spring swinging conical broken motor cone frequency far outweigh the eccentric cone crusher swinging frequency, materials in a broken lumen although only stay for a few seconds, but being broken dozen times to reach ekron-was far outweigh the eccentric spring cone crusher is broken frequency. Because of its unique structure and working principle of the characteristics, spring cone crusher compared with traditional crushing equipment in use and process has many advantages:

- 1) with good material layer selective crushing effect. Because is packed with feeding, being broken crushing cavity materials in a bear omni-directional extrusion, shear and strong ripple impact of particles, material layer between particles interact, causing the crushed material layer compulsory since the crushing cavity lining board to prevent lining board, prevent direct contact each other, avoid grinding down grinding materials metal contamination being broken, thus make grinding medium consumption of greatly reduced to just stick grinding machine, the 1/19, unit for ordinary than power broken only about half the equipment.
- 2) big crushing ratio, the granularity of product is adjustable. This machine has broken force and being broken material hardness and filling percentage is irrelevant, mainly depends on the partial 18-hour torque and speed. Adjust partial 18-hour torque, speed and discharging day size, can easily adjust the broken needed than (4-30), according to the need, can effectively avoid crushing, improve a grain yield level segment of the powder or contrary increase output.
- 3) technical indicators stabilized. The granularity of product almost lining board has nothing to do with wear.
- 4) operation convenient installation. Because the machine adopts second isolation, basic small vibration, noise is small, the installation work without need for huge basis and the anchor bolts.



Zhengzhou Toper Industrial Equipment Co., Ltd
 Add: No.101, Nanyang Road, Zhengzhou City, Henan Province, China
 Tel: 0086-371-63758707 Fax: 0086-371-63720313
 Email: toperkey@hi-toper.com

5) good after iron performance. Because moving cone and transmission mechanism without rigid connection between material, if people do not broken mix in the object, moving cone temporarily stop motion, a vibrator will orbit around move cone shaft continue rotating, absolutely won't destroy the transmission system and the host.

6) grinding process, reduce simplified broken auxiliary equipment sets. This machine full of feeding, no special feeder, but full load startup and parking, operation, monitoring and control is very convenient; Because the product fine granularity, need not constitutes a closed-circuit, save sieve equipment and infrastructure investment.

7) application scope. Adjust crusher work parameters can be breaking any hardness and brittleness material.

Technical Parameters

Model	Cone diameter (mm)	Max. feeding size (mm)	Width of discharging open (mm)	Processing Capacity (t/h)	Motor power (kw)
PYB-600	600	65	12--15	40	30
PYD-600		35	3--13	12--23	
PYB-900	900	115	15-50	50-90	55
PYZ-900		60	5--20	20-65	
PYD-900		50	3--13	15-50	
PYB-1200	1200	145	20-50	110-168	110
PYZ-1200		100	8--25	42-135	
PYD-1200		50	3--15	18-105	
PYB-1750	1700	215	25-50	280-480	160
PYZ-1750		185	10--30	115-320	
PYD-1750		85	5--13	75-230	
PYB-2200	2200	300	30-60	590-1000	260--280
PYZ-2200		230	10--30	200-580	
PYD-2200		100	5--15	120-340	



Zhengzhou Toper Industrial Equipment Co., Ltd

Add: No.101, Nanyang Road, Zhengzhou City, Henan Province, China

Tel: 0086-371-63758707 Fax: 0086-371-63720313

Email: toperkey@hi-toper.com



5. Impact Crusher

Production Introduction : impact crusher is a use of material to broken impact crushing machinery. The crushing equipment can deal with particle size is not more than 500 mm, compressive strength is no more than 350 mpa various materials. Big crushing ratio, broken with high efficiency and convenient maintenance etc. Products are in the cube, is senior highway and hydropower construction use aggregate ideal processing equipment. Impact crusher with its superior performance and good performance in highway construction, water conservancy engineering and architectural widely gravel processing, etc.

Production use : for no more than 500mm, crushing revised the compressive strength of not more than 350Mpa various materials. HeLuanShi of granite and limestone, etc have better applicability.

Impact crusher performance characteristics: high chrome plate hammer, wear-resisting counterattack lining board; Unique back foils triturated according; Especially suitable for hard-rock crushing, high efficiency and energy saving; The product shape is a cube, row partical size is adjustable, simplify crushing process.

Structure features:

1) feeding big size, crushing cavity high, suit high hardness, blocks degrees, product limestone is less;



Zhengzhou Toper Industrial Equipment Co., Ltd
Add: No.101, Nanyang Road, Zhengzhou City, Henan Province,
China
Tel: 0086-371-63758707 Fax: 0086-371-63720313
Email: toperkey@hi-toper.com

- 2) counterattack plate and plate hammer clearance can effectively control, convenient adjustment, the grain-size particle shape good;
- 3) compact structure, machines, strong rigidity, rotor with large inertia;
- 4) high chrome plate hammer, impact resistance, abrasion resistance, huge impact;
- 5) no key links, maintenance is convenient, economical and reliable;
- 6) crushing function complete, productivity high, parts of small, high abrasion comprehensive benefits.

Technical Parameters:

Model	Specification (mm)	Feeding opening size (mm)	Feeding size (mm)	Capacity (t/h)	Motor power (kw)	Weight (t)
PF-1007	R1000×700	400×730	300	30-50	45	9.5
PF-1010	R1000×1050	400×1080	350	50-90	55	15
PF-1210	R1250×1050	400×1080	350	70-130	110	17
PF-1214	R1250×1400	400×1430	350	100-180	132	22
PF-1315	R1320×1500	860×1520	500	130-250	220	26
PF-1320	R1320×2000	860×2030	500	160-350	300-375	30



Zhengzhou Toper Industrial Equipment Co., Ltd
Add: No.101, Nanyang Road, Zhengzhou City, Henan Province, China
Tel: 0086-371-63758707 Fax: 0086-371-63720313
Email: toperkey@hi-toper.com



6. Hammer Crusher

Introduction: For years extension Topper industrial design and manufacture the history of heavy hammer crusher, advanced structure, reliable performance, stable and low energy consumption. This series of products are applicable to break all sorts of medium hardness and brittleness material, such as limestone, coal, salt, BaiYa, gypsum, alumen and bricks, tiles, gangue, etc. Being broken material the compressive strength of not more than 150 mpa. This machine is mainly used for cement, coal cleaning, power generation, building materials and compound fertilizer, etc, it can make the different sizes of the raw material break into uniform particle, so as to facilitate the processing of next working procedure, the mechanical structure and reliable, high production efficiency, applicability, good.

Hammer crusher mainly by the frame body, rotor, sieve bar, blow board and adjusting equipment etc.

Hammer crusher performance features:

Hammer crusher with compact structure, rational layout, easy installation, maintainability, convenient operation. Good Especially for cement production



Zhengzhou Toper Industrial Equipment Co., Ltd

Add: No.101, Nanyang Road, Zhengzhou City, Henan Province, China
 Tel: 0086-371-63758707 Fax: 0086-371-63720313
 Email: toperkey@hi-toper.com

process layout adaptability is extremely good. Save process layout space; With special structure characteristics of material that the big broken than etc.

Characteristics.

Hammer crusher is divided into ordinary hammer crusher and ring hammer crusher two kinds, ring of hammer type generally in coal, coke, etc. Used in a wide broken Ordinary of hammer type machine general English prefix, said by PC with the PCH says English prefix hammer crusher is generally ring.

Hammer crusher technical parameters:

Model	Feeding size (mm)	Discharging size (mm)	Capacity (t/h)	Motor power (KW)	Weight (Kg)
PC400×300	≤100	≤10	5--10	11	800
PC600×400	≤120	≤15	10--25	18.5	1500
PC800×600	≤120	≤15	20-35	55	3100
PC1000×800	≤200	≤13	20-40	115	7900
PC1000×1000	≤200	≤15	30-80	132	8650
PC1300×1200	≤250	≤19	80-200	240	13600

Ring hammer crusher

Model	Feeding size (mm)	Discharging size (mm)	Production(t/h)	Rotate speed(r/min)	Motor power		Weight(t)
					Model	power	
PCH0402	≤200	≤30	8--12	960	Y132M2-6	5.5	0.8
PCH0404	≤200	≤30	16-25	970	Y160L-6	11	1.05
PCH0604	≤200	≤30	22-33	970	Y180L-6	15	1.43
PCH0606	≤200	≤30	30-60	980	Y225M-6	30	1.77
PCH0808	≤200	≤30	70-105	740	Y280M-8	45	3.6
PCH1010	≤200	≤30	160-200	740	Y315M2-8	90	6.1
PCH1016	≤300	≤30	300-350	740	JS-128-8	155	9.2
PCH1216	≤350	≤30	620-800	740	Y450-8	355	15
PCH1616	≤400	≤30	700-900	740	YKK5001-8	400	19.3



Zhengzhou Toper Industrial Equipment Co., Ltd

Add: No.101, Nanyang Road, Zhengzhou City, Henan Province, China

Tel: 0086-371-63758707 Fax: 0086-371-63720313

Email: toperkey@hi-toper.com



7 Single-stage Hammer Crusher

Single-stage hammer crusher is to adapt to limestone, gesso, coal and other basic industrial raw material further simplify crushing operations process and development design. Our company produces the medium, large period of hammer crusher has high productive capacity, big crushing ratio, product of granularity, technological process of simple features, can meet 5000 t/d cement production line below the need of limestone broken.

Single-stage hammer crusher performance features:

1. Allow hello partical big;
2. Big crushing ratio, product size is small;
3. Used when impact breakage production, the grain-size can be in 3-30mm range according to needs to adjust;
4. Than conventional level 3 broken electricity saving 40%;
5. Process is simple, cover an area of an area small;



Zhengzhou Toper Industrial Equipment Co., Ltd

Add: No.101, Nanyang Road, Zhengzhou City, Henan Province, China

Tel: 0086-371-63758707 Fax: 0086-371-63720313

Email: toperkey@hi-tooper.com

-
6. Key wear-resistant materials (hammer) long life.
 7. Unloading grate plate can be turned; it is convenient to adjust in
 8. Simple structure, convenient maintenance, management, operation and maintenance costs low.

Technical parameters:

Model	Diameter (mm)	Length (mm)	Feeding size (mm)	Discharging size (mm)	Capacity (t/h)	Main power (kw)	Weight (t)
TPC1412	1420	1194	600	25	70-120	110-190	24
TPC1616	1650	1630	800	25	150-220	280-400	43.4
TPC1817	1850	1735	900	25	250-400	400-560	70
TPC2022	2010	2237	1000	25	500-600	800	89
TPC2022A	2010	2237	1100	25	500-630	800-1000	123



Zhengzhou Toper Industrial Equipment Co., Ltd
Add: No.101, Nanyang Road, Zhengzhou City, Henan Province, China
Tel: 0086-371-63758707 Fax: 0086-371-63720313
Email: toperkey@hi-toper.com

Grinding Mill



1 Ball Mill

Ball mill machine is the material being broken after, then to smash the key equipment. It is widely used in cement, Portland products, new building materials, fire-proof material, chemical fertilizer, black and non-ferrous metal processing, such as glass-ceramics industry production of all kinds of ores and other materials may be grinding of dry or wet grinding. I companies provide multiple application field, different specifications and types of grinding machine with grinding machine, both ore, and coal pulverizer, cement mill; According to different ways, can exhaust ore grate type and the overflow type points in two; According to grinding medium different cent is great grinding, ball mill, since the mill, a semi-autogenous grinding mill etc.

The ball mill are divide into feeding department, discharging department, rotary department, transmission parts (deceleration machine, small gears, motor, electric control) and other major parts. Hollow shaft adopts steel castings, the lining can turn big gear failure safety, by casting roll teeth processing, the cylinder body set have wear-resisting lining board, has good abrasion resistance.

The ball mill features:

1) transmission part: be the edge and centre drive, with auxiliary transmission series. Small gear part adopts spherical roller bearing, flexible coupling



Zhengzhou Toper Industrial Equipment Co., Ltd

Add: No.101, Nanyang Road, Zhengzhou City, Henan Province, China

Tel: 0086-371-63758707 Fax: 0086-371-63720313

Email: toperkey@hi-toper.com

connection, according to the requirements of tooth face, selection of hard-toothed surface reducer.

2) supporting parts: high-low voltage hydrodynamic-hydrostatic bearing, through the realization of automatic self-aligning sphere. Supporting into hollow shaft supporting and sliding shoe supporting two forms. On housing, bearings equipped with water-cooling device and automatic temperature measuring device.

3) rotary parts: cylinder material chooses high-quality carbon steels, adopts automatic welding forming, overall annealing eliminate stress, mechanical processing manholes. Lined with match with high manganese steel series, medium carbon steel series multiple alloys and new anti-wear alloy material.

Grate Type Technical parameters:

Model	Shell size(mm)	Volume(m3)	Shell speed (r/min)	Max load ball(t)	Motor Power(kw)	Load size(m)	Weight(t)
MQS1224	1200×2400	5	26.6	9	95	6.4×2.9×2.6	18
MQS1515	1500×1500	2.3	29.2	4.8	60	5.7×3.2×2.8	13
MQS1524	1500×2400	3.7	29.2	7.6	90	6.9×3.3×2.8	16
MQS1530	1500×3000	4.6	26.6	10	90	7.6×3.4×2.8	19
MQS2130	2100×3000	9.4	22.1	20	220	8.5×4.65×3	45
MQS2430	2400×3000	12.2	21	25	250	8.8×4.7×4.4	55
MQS2470	2400×7000	26.66	21	54	475	14.3×5.8×4.4	67
MQS2721	2700×2100	10.6	19.7	22	280	9.7×6.5×4.8	69
MQS2736	2700×3600	18.5	20.5	39	400	12×5.8×4.7	74
MQS2740	2700×4000	20.5	20.24	38	400	12.4×5.8×4.7	77
MQS2760	2700×6000	34.34	19.5	53	630	12×5.7×4.5	84
MQS2941	2900×4100	26	19.34	42	450	9.9×6.1×5.1	76.1
MQS3164	3100×6400	43.7	18.3	56	1000	15.2×6.98×5.8	141
MQS3231	3200×3100	22.65	18.3	46.9	500	13.9×7.3×6.0	109
MQS3236	3200×3600	26.3	18.3	54	630	14.3×7.3×6.0	115
MQS3240	3200×4000	29.2	18.2	60	710	14.7×7.3×6.0	120
MQS3245	3200×4500	32.9	18.3	68.5	800	15.2×7.3×5.9	126
MQS3254	3200×5400	39.4	18.3	81.6	1000	16.6×7.3×6.1	135
MQS3645	3600×4500	41.4	17.25	86	1000	13.5×7.3×6.3	152
MQS3660	3600×6000	54	17.3	112	1400	15.5×8.3×6.3	189
MQS3685	3600×8500	79	17.4	144	1800	20×8.2×7.1	259
MQS4060	4000×6000	69.8	16	126	1500	17.4×9.34×7.5	216
MQS4067	4000×6700	76	16	155	1600	16×8.43×7.5	235
MQS40135	4000×13500	157	16.5	280	3300	24.2×9.9×7.8	284/375



Zhengzhou Toper Industrial Equipment Co., Ltd

Add: No.101, Nanyang Road, Zhengzhou City, Henan Province, China

Tel: 0086-371-63758707 Fax: 0086-371-63720313

Email: toperkey@hi-toper.com

Overflow type technical parameters:

Model	Shell size (mm)	Volume (m3)	Shell speed (r/min)	Max load ball (t)	Motor power (kw)	Install size (m)	Weight (t)
MQY1530	1500×3000	5	26.6	9	95	7.4×3.4×2.8	18
MQY1536	1500×3600	5.7	26.6	10.6	95	8.0×3.4×2.8	17
MQY1861	1830×6100	13.4	24.5	24.6	220	10.2×5.1×4.0	37
MQY2130	2100×3000	9.4	22.1	15	200	8.5×4.65×3	45
MQY2430	2400×3000	12.2	21	22.5	250	8.8×4.7×4.4	55
MQY2470	2400×7000	26.66	21	48	475	14.3×5.8×4.4	67
MQY2736	2700×3600	18.5	20.5	39	400	9.8×5.8×4.7	60
MQY2740	2700×4000	20.5	20.24	38	400	10.4×5.8×4.7	70
MQY2745	2700×4500	23.5	20.5	43.5	500	12.5×5.8×4.7	76
MQY2760	2700×6000	34.34	19.5	53	630	13.5×5.9×4.7	71
MQY2854	2800×5400	30	19.5	55.2	630	13×5.83×4.7	98
MQY2880	2800×8000	43	20	78.6	800	16.5×7.3×5.0	115
MQY3011	3000×11000	69.2	17.3	100	1250	28.9×3.8×5.0	227
MQY3236	3200×3600	26.3	18.3	48.4	500	14.3×7.3×6.0	116
MQY3240	3200×4000	29.2	18.2	60	560	16.7×7.3×6.0	121
MQY3245	3200×4500	32.9	18.3	60.5	630	13×7.0×5.82	124
MQY3254	3200×5400	39.4	18.3	73	800	14.2×7.0×5.8	129
MQY3264	3200×6400	46.75	18.3	86	1000	15.2×7.0×5.8	140
MQY3275	3200×7500	55.5	18.3	102	1250	17.7×8.4×6.3	154
MQY3290	3200×9000	64.2	18.3	106.6	1250	18.5×7.3×6.0	173
MQY3445	3400×4500	37	18.4	74.6	800	11.5×7.0×6.1	129
MQY3456	3400×5600	45.8	17.9	84.3	1120	16.7×7.6×6.3	132
MQY3645	3600×4500	41.4	17.25	76	1000	13×7.3×6.3	144
MQY3650	3600×5000	46.7	17.5	85.96	1250	15×7.6×6.2	150
MQY3650	3600×5000	46.7	17.3	85.96	1250	23×4.6×6.3	176
MQY3656	3600×5600	55.4	17.76	106.3	1250	14.4×8.0×6.3	159
MQY3660	3600×6000	55.7	17.3	102.5	1250	24×4.6×6.3	138
MQY3660	3600×6000	54	17.3	102	1250	15.6×8.3×6.3	162
MQY3661	3600×6100	55.36	17.76	106.3	1200	15.8×8.5×6.2	164
MQY3685	3600×8500	79	17.4	131	1800	20×8.2×7.1	251
MQY3690	3600×9000	83.5	17.4	138	1800	28×4.6×5.6	286
MQY3867	3800×6700	70	16.5	130	1400	19×8.2×7.1	185
MQY4060	4000×6000	69.8	16	126	1500	17.4×9.5×7.6	203
MQY4067	4000×6700	78	16	136.3	1600	15.6×9.6×7.3	206
MQY40135	4000×13500	155	16	233	3300	23×10×4.9	343



Zhengzhou Toper Industrial Equipment Co., Ltd

Add: No.101, Nanyang Road, Zhengzhou City, Henan Province, China

Tel: 0086-371-63758707 Fax: 0086-371-63720313

Email: toperkey@hi-toper.com

MQY4361	4270×6100	80	15.67	144	1750	14×10×7.7	215
MQY5064	5030×6408	120	14.4	251	2600	14.6×11×9.1	318
MQY5083	5030×8300	152.3	14.4	266	3300	22×10.5×9.0	402
MQY5565	5500×6500	143.3	13.8	264	3400	18.5×9.8×8.9	451
MQY5585	5500×8500	187.4	13.8	335	5400	20.5×12×9.8	480



2 Air swept Raw Mill

The ball mill features:

1) transmission part: be the edge and centre drive, with auxiliary transmission series. Small gear part adopts spherical roller bearing, flexible coupling connection, according to the requirements of tooth face, selection of hard-toothed surface reducer.

The wind sweeping drying is our company grinding materials in domestic first launched the cement plant grinding materials with drying. Has been formed MF320, MF350 MF380, MF395, MF420, respectively, many series products used to meet 800t/d, 1200t/d, 2000t/d, 2500t/d of clinker introduces/d production line, the raw with grinding, the grinding process of saving investment, simple and convenient operation, maintenance workload bottom pulverizing system etc, power consumption and vertical grinding close.

The wind sweeping drying mainly by feeding device grinding materials, Lord bearings, rotary parts, gearing, discharging device, high-pressure starting device and lubrication system composition.

The wind sweeping drying principle: raw material grinding materials by feeding by feeding equipment, within loaded into the ground by into duct into the mill hot, within the cylindrical grinding machine with rotating, raw materials and hot air in grinding heat, raw material in the grinding shattered and grinding, within the materials are lapping at the same time, fine powder was through the hot air, via within grinding of mill discharging device brought out the grinding machine.



Zhengzhou Toper Industrial Equipment Co., Ltd
 Add: No.101, Nanyang Road, Zhengzhou City, Henan Province, China
 Tel: 0086-371-63758707 Fax: 0086-371-63720313
 Email: toperkey@hi-toper.com

The wind sweeping drying raw material grinding characteristics: reasonable structure, high grinding efficiency, it is the ideal equipment for pulverizing raw.

Technical parameters:

Specification	Capacity(t/h)	Shell speed(r/min)	Rotating form	Motor		Reduction gears		weight(t)
				Pressure(kv)	Power(kw)	Model	Speed	
Ø3.2×4.7	30-35	18.42	edge	6(10)	680	RZD80	6.72	143
Ø3.5×6.0	50-55	17.57	edge	6(10)	1000	JDX630	6.3	152
Ø3.8×7.2	85	17	edge	6(10)	1400	MBY800J	4.5	196
Ø3.8×7.4	90-95	17	edge	6(10)	1400	MBY800J	4.5	212
Ø3.8×7.9	95-100	17	edge	6(10)	1600	MBY800J	4.5	215
Ø3.8×8.3	100-105	17	edge	6(10)	1600	MBY900J	4.5	217
Ø3.8×8.6	105-110	17	edge	6(10)	1800	MBY900J	4.5	220
Ø4.2×9.5	160	17	edge	6(10)	2500	MBY1000	5	240



3 Tube Mill

Tube mill series products are mainly used in cement products and raw material grinding (divided into raw material grinding and cement mill), also suitable for metallurgy, chemical, electric grinding industrial mining enterprises such as all kinds of ores and other sexual material can be sharpened. Can be used for grinding open flow, and also applies to and classifier composed of close-circuit grinding.



Zhengzhou Toper Industrial Equipment Co., Ltd

Add: No.101, Nanyang Road, Zhengzhou City, Henan Province, China

Tel: 0086-371-63758707 Fax: 0086-371-63720313

Email: toperkey@hi-toper.com

Tube mill machines have to material adaptable, can the continuous production, big crushing ratio, easy to adjust the fineness of grinding products etc. It capable method production can also wet production, can also grinding and drying simultaneously homework.

Raw material grinding Technical parameters:

Model (m)	Capacity (t/h)	Shell speed (r/min)	Rotating speed	Motor		Reduction gears		Weight (t)
				Model	Power (KW)	Model	Speed	
Ø2.2×6.5	18	21.4	edge	JR148-8	310	ZD70	5	44
Ø2.4×7	22-24	20.4	edge	JRQ1510-8	475	ZD70	5	67
Ø2.4×8	26-28	20.14	edge	JR1512-8	570	ZD80	6.3	90
Ø2.6×13	11-15	19.7	edge	YR1000-8/1180	1000	JDX800	6.3	137
Ø2.8×6.5	35	18.65	edge	JR1512-8	630	ZD80	6.3	90
Ø2.8×10	45-48	18.65	edge	YR800-8/1180	800	MFY80	37.5	160
Ø3×6.5	37	18.58	edge	YR800-8/1180	800	JD800	5.6	115
Ø3×9	40-50	18.58	edge	YR1000-8/1180	1000	JD800B	5.6	132
Ø3×12	72-75	17.85	edge	YR1400-8/1430	1400	MBY900	5	196
Ø3×12	65-75	18	center	YR630-8	1400	JS110-B-F1	42.22	202
Ø3.2×12	72-75	17.86	edge	YR1400-8/1430	1400	JDX900	6.3	167
Ø3.4×7.5	70	16.9	edge	YR1000-10	1000	ZDA-100	63	167
Ø3.5×10	90	16.8	center	YR1250-8/1430	1250	JS100-A	44.1	154
Ø4.6×9.5+3.5	180	15	center	YR2500-6/1430	2500			272

Cement mill Technical parameters:

Model (m)	Capacity (t/h)	Shell speed (r/min)	Rotating speed	Motor		Reduction gears		Weight (t)
				Model	Power (KW)	Model	Speed	
Ø2.2×7	18	21.4	edge	JR158-8	380	ZD70	5	48
Ø2.2×7.5	12-13	21.4	edge	JR1510-8	380	ZD70	5	55
Ø2.4×7	22-24	20.4	edge	JR1510-8	475	ZD70	5	67
Ø2.4×8	26-28	20.14	edge	JR1512-8	570	ZD80	6.3	89
Ø2.4×10	20	20	edge	YR560-8	560	RZD75	4.8	91
Ø2.4×12	23	19.4	edge	YR800-8/1180	800	JD800	5.6	120
Ø2.4×13	25	19.71	center	YR800-8/1180	800	D110	123.53	96
Ø2.4×13	25	20.4	edge	YR800-8/1180	800	MF710	6.3	119
Ø2.6×13	30	19.7	edge	YR1000-8/1180	1000	JDX800	6.3	164
Ø3×9	33	18	edge	YR1000-8/1180	1000	MBY800	6.3	157
Ø3×11	42-50	18	center	YR630-8	1250	MFY125A	41.1	110



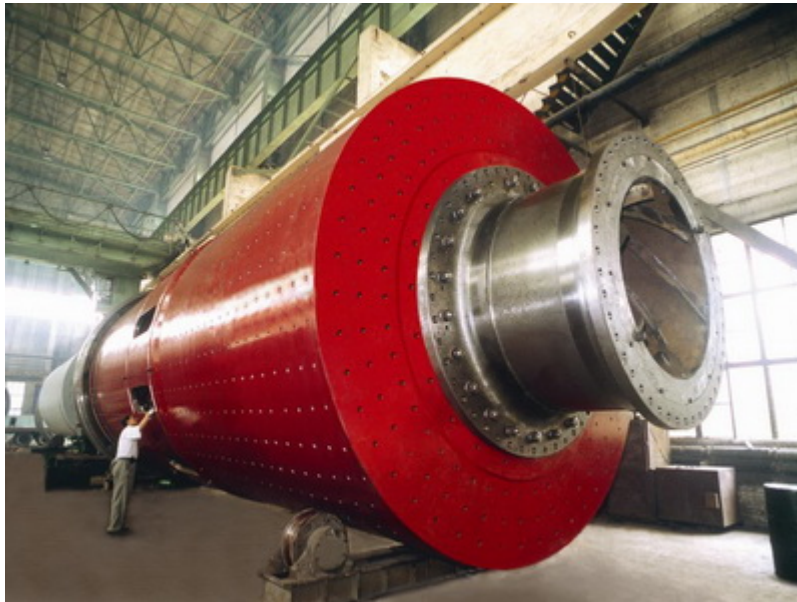
Zhengzhou Toper Industrial Equipment Co., Ltd

Add: No.101, Nanyang Road, Zhengzhou City, Henan Province, China

Tel: 0086-371-63758707 Fax: 0086-371-63720313

Email: toperkey@hi-toper.com

Ø3×11	42-50	17.86	edge	YR1250-8/1180	1250	MBY800	5	175
Ø3×12	34-37	17.86	edge	YR1250-8/1430	1250	MBY900	5	185
Ø3×13	35-38	17.86	edge	YR1250-8/1430	1250	JDX900	5	188
Ø3.2×12	45-50	17.86	edge	YR1400-8/1430	1400	MBY900	5	195
Ø3.2×13	50-55	17.86	edge	YR1600-8/1430	1600	MBY900	5	205
Ø3.4×8.5	50	17.2	center		2000			113
Ø3.5×11	65-70	16.5	center		2500	JS1250		141
Ø3.8×13	60	16.3	center		2800			230
Ø4.2×11	90	15.75	center					252
Ø4.2×13	100	15.8	center	YRKK900-8	3150			260



4 Rod Mill

Rod milling machine is widely applied in the metal and nonmetal mines and water conservancy, building materials department all kinds of ores or rock grinding. The subject of rod milling machine is a level into two large bearings at low speed rotary cylinder. Tank diameter 900-2100mm great paper mill for the Y series and torque regulated JR asynchronous motor drive, large gauge rod milling machine is used for grinding machine TDMK type, low speed synchronous motor through the air with pinions, clutch single decelerate drive realize turn department turn. Because equipped with air clutch, can realize motor startup, reduce start host subsection power, improve startup conditions. Tank diameter 900 - the 2100mm rod milling machine Lord bearing using spherical watts bearing, tank diameter rod milling machine 2700mm above are used fully enclosed automatic self-aligning 120 "rocker" type bearings, using high lead low tin low hardness babbitt, under which the post-cooling water



Zhengzhou Toper Industrial Equipment Co., Ltd
 Add: No.101, Nanyang Road, Zhengzhou City, Henan Province, China
 Tel: 0086-371-63758707 Fax: 0086-371-63720313
 Email: toperkey@hi-toper.com

cooling tube embedded. Bearing have static structure and high-low voltage joint oil lubrication.

Technical parameters:

Model	Specification	Shell volume	Max load ball	Work speed	Motor power	Discharging size	Production	Weight
	(mm)	(m ³)	(t)	(r/min)	(KW)	(mm)	(t/h)	(t)
MB1530	1500×2100	4.5	11.5	26.5-29.8	95	0.3-0.074	2.8-6	17.3
MB2130	2100×3000	9.2	23.5	19-21	210	0.3-0.074	5.8-12.6	43
MB2136	2100×3600	11	28.2	19-21	210	0.3-0.074	7-15.1	58
MB2736	2700×3600	18.4	47	17.2-18.5	400	0.3-0.074	11.5-25	70
MB2740	2700×4000	20.4	51	17.2-18.5	400	0.3-0.074	12.7-27.7	72
MB3245	3200×4500	32.8	84	15.4-16.6	630	0.3-0.074	21-44	110
MB3645	3600×4500	40.8	110	14.5-15.6	1250	0.3-0.074	33-72	160



5.Low Speed Coal Mill

Low speed coal pulverizer low-speed pulverizer mainly for ball mill, generally referred to as reverse-force cylinder ball mill or ball mill. It is a rotating cylindrical or for conical roller, ends in a steel drum. Roller speed of 15 ~ 25 turn/points. Work in the cylinder of steel ball's constantly hit and extrusion, grinding into buring coal pulverized coal. Then the ventilation with roller hot



Zhengzhou Toper Industrial Equipment Co., Ltd

Add: No.101, Nanyang Road, Zhengzhou City, Henan Province, China

Tel: 0086-371-63758707 Fax: 0086-371-63720313

Email: toperkey@hi-tooper.com

coal drying within and will be sent out by the separator, coal separation, must granularity of coal powder into coal warehouse or directly into the pulverized coal burners. Ball mill bulky huge, high power consumption, noise big; But for coal adapt range, reliable operation, especially suitable for abrading hard anthracite.



6. Vertical Coal Mill

Vertical mill is mainly used for grinding various hardness coal use. Its strong adaptability, reliable operation, convenient maintenance. Vertical mill is equipped with jacked up device, sieve unloaded ball device, slow transmission device and high and low voltage lubricating oil station do static and dynamic pressure lubrication. Jacked up device for main bearing rotation pulverizers jacked up maintenance department. Sieve unloaded ball devices are used to mill regular screening steel ball and unloaded steel ball.

Working principle: coal grinding machine is broken and ground into burning coal machinery, it is the important auxiliary equipment pulverized coal stove.

Grinding coal process is coal being broken and area increased process. Coal in coal mill in pulverized coal grinding into, mainly through crush, break and grinds broken three ways.

Characteristic: coal mill after is the material being broken, and then to smash the key equipment. Coal mill widely used in cement, Portland products, new



Zhengzhou Toper Industrial Equipment Co., Ltd

Add: No.101, Nanyang Road, Zhengzhou City, Henan Province, China

Tel: 0086-371-63758707 Fax: 0086-371-63720313

Email: toperkey@hi-toper.com

building materials, fire-proof material, chemical fertilizer, black and non-ferrous metal processing, such as glass-ceramics industry production of all kinds of ores and other materials may be grinding of dry or wet grinding.

Technical parameters:

Model	Figure number	Shell Diameter mm	Shell Length mm	Mill speed r/min	Max load ball		Feeding size mm	Production t/h
					Weight t	Filling ratio		
MTZ2126	K9311	2100	2600	22.81	10	0.236	Φ600 600	4
MTZ2133	K9312		3300		13	0.424	Φ650 650	6
MTZ2532	K9321	2500	3200	20.63	18	0.244	Φ750 750	8
MTZ2539	K9322		3900	20.77				22
MTZ-W2935	K9331	2900	3500	19.34	26	0.239	Φ850 850	12
MTZ2935	K9335							
MTZ-W2941	K9333		4100		30	0.236		14
MTZ-W2947	K9332		4700		35	0.24	Φ950 950	16
MTZ2947	K9334							
MTZ-W3247	K9341	3200	4700	18.42	44	0.248	Φ1050 1050	20
MTZ3247	K9345				18.52	40	0.225	
MTZ-W3258	K9342		5800	18.42	55	0.213	Φ1120 1120	25
MTZ3258	K9344							
MTZ3257	K9346		5700	18.54	50	0.194	Φ1120 Φ1310	
MTZ3560	K9359		3500	6000	17.57	59	0.217	
MTZ3570	K93510	7000		69		0.218	Φ1350 Φ1550	35
MTZ-W3883	K9362	3800	8300	17	95	0.219	Φ1700 1700	50
MTZ3865	K9363		6500		75	0.20	Φ1574 Φ1700	40
MTZ3872	K9364		7200		85	0.205		45
MTZ3879	K9365		7900		95	0.21		50
MTZ3886	K9366		8690		105	0.213		55



Zhengzhou Toper Industrial Equipment Co., Ltd

Add: No.101, Nanyang Road, Zhengzhou City, Henan Province, China

Tel: 0086-371-63758707 Fax: 0086-371-63720313

Email: toperkey@hi-toper.com



7 Air Swept Coal Mill

The air sweeping coal mill is the main equipment in cement production line, used for drying and grinding coal. The wind sweeping coal mill consist mainly of feeding device, main bearings, rotary parts, gearing, discharging device, high-pressure starting device and lubrication system composition.

The wind sweeping coal mill principle: coal feeding equipment by feeding loaded into the ground inside, hot air into duct into the ground from within, as the rotation of the cylinder grinding machine, hot air in grinding coal and coal in grinding heat within, shattered and grinding, in the meanwhile, by grinding coal powder was through the hot air, via within grinding of mill discharging device brought out the grinding machine.

The wind sweeping coal mill advantage: reasonable structure, high grinding efficiency, it is the ideal equipment of coal preparation.

Technical parameters:

Specification	Capacity(t/h)	Shell speed(r/min)	Rotating form	Motor		Reduction speed		weight(t)
				Model	Power(kw)	type	speed	
Ø2.2×3	5—6	22	边缘	YR355M-8	185	ZD50	5	31.5
Ø2.2×4.4	8—9	22	边缘	YR355-6	220	ZDH50	6.3	40.3
Ø2.4×4.75	14	20.4	边缘	YR400-8	280	ZD60	4.5	48.3
Ø2.4×4+2	10-12	20.2	边缘	YRKK450-8	250	ZDY355	4.5	53.9
Ø2.4×(4.5+2)	16-17	20.4	边缘	YR4005-8	280	JDX450	4.5	70.3
Ø2.6×(4.8+2)	9-10	20	边缘	YRKK5002-8	400	RZD75	4.5	85.23
Ø2.8×(5+3)	8-10	18.9	边缘	JRQ1512-10	480	MCD-70	3.55	101.9
Ø3×9	18—20	18.3	边缘	YBKK560-8	630	MBY560	5	119
Ø3.2×9.5	28	17	边缘	YR800-8/1180	800	NFM710	6.3	135
Ø3.4×(5.25+2.8)	30	17.47	边缘	YRKK-56-6	900	JDX800	7.157	163.6
Ø3.8×(7.25+3.5)	41-43	16.7	边缘	YR630-8	1400	MBY800	5.6	220



Zhengzhou Toper Industrial Equipment Co., Ltd
Add: No.101, Nanyang Road, Zhengzhou City, Henan Province, China
Tel: 0086-371-63758707 Fax: 0086-371-63720313
Email: toperkey@hi-toper.com



8. Desulfurization Wet Limestone Mill

CWS Mill desulfurization is our company research and development of a new environmental protection equipment, is coal-fired power plant flue gas desulfurization agent slurry preparation system - the limestone main equipment. Meanwhile, also suitable for metallurgy, chemical, aluminium industries flue gas desulfurization preparation system, this series of products with compact structure, easy installation and maintenance etc, smooth operation, widely used in crushing various hardness of limestone or other sexual material can be sharpened.



Zhengzhou Toper Industrial Equipment Co., Ltd

Add: No.101, Nanyang Road, Zhengzhou City, Henan Province, China

Tel: 0086-371-63758707 Fax: 0086-371-63720313

Email: toperkey@hi-toper.com



10. Raymond Mill

Raymond Mill is mainly used in crushing various can shatter the hardness of friable materials, materials should be less than mok's hardness 9 levels, material cannot contain large iron content, high compressive strength, apply to smash combustible, does not apply to smash Chinese herbal medicine, wood material. Such s toughness

- Features:
1. Tilting containing sand mill: one-time high percentage of the material through this machine, sand the highest content of up to 75%
 2. Tilting ground can multi-usage: tilting a mill and auxiliary equipment composition can produce various after closed-circuit line size of products.
 3. Tilting the mill of high efficiency: tilting ground is used for making coarse sand powder and the efficiency of ball mill, Raymond grinding, higher than the mill etc.
 4. Wear material utilization high: tilting in a mill grinding roll from top to bottom, is uniform worn like Raymond grinding roller grinding depression will have to replace central.
 5. Low failure rate: tilting grinding machine special grinding roller structure and sealing makes it more stable than Raymond grinding operation, the more lasting.

Applicable scope: tilting grinding machine is mainly used in crushing various can shatter the hardness of friable materials, materials should be less than mok's hardness 9 levels, material cannot contain large iron content, high



Zhengzhou Toper Industrial Equipment Co., Ltd
Add: No.101, Nanyang Road, Zhengzhou City, Henan Province,
China
Tel: 0086-371-63758707 Fax: 0086-371-63720313
Email: toperkey@hi-tooper.com

compressive strength, apply to smash combustible, also does not apply to smash Chinese herbal medicine, wood material. Such s toughness

Rotary Kiln And Dryer



Rotary Kiln

Rotary kiln cement clinker dryprocess and wet are the main equipment of production line, is high-grade cement clinker the necessary equipment production. Also widely used in metallurgical, chemical, building, fire-proof material, environmental protection industry, etc.

Rotary transmission device divide into barrel, supporting device, block, kiln head, sealing device hoods and burning device, kiln components.

Rotary kiln cylinder is heated rotary parts, using quality calm steel plate soldering and become, barrel through the LunDai strut in 2-7 against sliding or rolling bearing support device, and amid a or a few files on the device equipped with mechanical or support, to control the hydraulic block wheel cylinder body axial channeling move; Transmission device through the barrel of the gear ring that central cylinder body required speed turned; Due to the need of installation and maintenance, larger kiln has made barrel at a low speed rotary auxiliary transmission device; To prevent cold air into the dust and gas spill in cylinder, the incoming end (tail) and the material end (head) a reliable preheater and kiln head sealing device. Cylinder Settings temperature measuring devices on the hoods, kiln pressure measuring element with.

Metallurgy Rotary Kiln Technical parameters:



Zhengzhou Toper Industrial Equipment Co., Ltd

Add: No.101, Nanyang Road, Zhengzhou City, Henan Province, China

Tel: 0086-371-63758707 Fax: 0086-371-63720313

Email: toperkey@hi-toper.com

Specification(m)	Shell Speed(r/min)	Obliquity (%)	Capacity(t/h)	Bearings form	Block form	Motor power(KW)
Ø3.2×26A	0.71~1.58	3.5	40	Rolling Bearing	Hydraulic pressure	90
Ø3.2×28A	0.67~1.69	3.5	50	Rolling Bearing	Hydraulic pressure	110
Ø3.5×29C	0.6~1.7	4	70	Rolling Bearing	Hydraulic pressure	160
Ø4×28E	0.48~1.6	4	90	Rolling Bearing	Hydraulic pressure	160
Ø4×32	0.3~1.48	4.25	120	Rolling Bearing	Hydraulic pressure	160
Ø4.3×32	0.5~1.6	4	≥120	Rolling Bearing	Hydraulic pressure	190
Ø4.5×30	0.46~1.45	4	≥110	Rolling Bearing	Hydraulic pressure	250
Ø4.6×33	0.46~1.45	4	140	Rolling Bearing	Hydraulic pressure	315

Oil Calcining Rotary Kiln Technical parameters:

Specification (m)	Shell Speed (r/min)	Obliquity (%)	Capacity (t/h)	Bearings form	Block form	Motor power (KW)	Weight(t)
Ø2.2×45	0.504~1.51	3	5~6	Rolling Bearing	mechanical	55	12.58
Ø2.84×55	0.1~2.5	3	8~10	Rolling Bearing	mechanical	75	248.35
Ø2.84×58	0.25~2.5	3	8~10	Rolling Bearing	mechanical	75	262.4
Ø3.6×62	1.6	3.5	12~15	Rolling Bearing	mechanical	110	410.768

Chemical Rotary Kiln Technical parameters:

Specification (m)	Shell Speed (r/min)	Obliquity (%)	Bearings form	Block form	Motor power (KW)	Weight (t)
Ø3×26.7	0.6	3.5	Rolling Bearing	mechanical	160	257.8
Ø3.6×42	0.6	3.5	Rolling Bearing	mechanical	220	568.7



Zhengzhou Toper Industrial Equipment Co., Ltd

Add: No.101, Nanyang Road, Zhengzhou City, Henan Province, China

Tel: 0086-371-63758707 Fax: 0086-371-63720313

Email: toperkey@hi-toper.com

Building materials Rotary Kiln Technical parameters:

Specification (m)	Capacity(t/d)	Obliquity (%)	Block form	Motor power (KW)	Weight (t)
Ø2.5×40	180	3.5	mechanical	45	142
Ø2.5×60	168	3.5	mechanical	75	222
Ø3×48	700	3.5	mechanical	110	244
Ø3×60		3.5	mechanical	75	190
Ø3×100.94	450	4	mechanical	90	526
Ø3.2×46	1000	3.5	mechanical	160	257
Ø3.2×52	1200	3.5	mechanical	125	275
Ø3.3×50	1300	3.5	Hydraulic pressure	160	266
Ø3.3×52	1300	3.5	Hydraulic pressure	125	283
Ø3.5×54	1500	3.5	Hydraulic pressure	220	363
Ø3.6×70	1800	3.5	Hydraulic pressure	125	419
Ø4×60	2500	3.5	Hydraulic pressure	315	510
Ø4.15×58		5	Hydraulic pressure	110	620
Ø4.2×60	3000	4	Hydraulic pressure	375	533
Ø4.3×60	3500	3.5	Hydraulic pressure	375	553
Ø4.5×66	4000	3.5	Hydraulic pressure	560	710.4
Ø4.8×74	5000	4	Hydraulic pressure	630	841



Zhengzhou Toper Industrial Equipment Co., Ltd
 Add: No.101, Nanyang Road, Zhengzhou City, Henan Province, China
 Tel: 0086-371-63758707 Fax: 0086-371-63720313
 Email: toperkey@hi-toper.com



Rotary Dryer

Rotary dryer is used to dry cement factory clay, limestone, coal and mixed materials equipment, and also used in metallurgy, mining, power, chemical, food and other departments. Rotary dryer plant is the most commonly used drying equipment. It to material compatible. Can dry each material and equipment operation is simple, reliable, dustproof, seal, easy maintenance.

Metallurgy Rotary dryer Technical parameters:

Specification	Shell diameter	Shell length	Shell obliquity	Motor power	Highest inlet air temperature	Shell Speed	Capacity	Weight
	(m)	(m)	(%)	(KW)	(°C)	(r/min)	(t/h)	(t)
Ø 2.4×18	2.4	18	5	110	700	4.3	40	47
Ø 3×20	3	20	4	160	700	4.15	80	90
Ø 3.2×24	3.2	24	4	250	700	4.17	120	143



Zhengzhou Toper Industrial Equipment Co., Ltd
 Add: No.101, Nanyang Road, Zhengzhou City, Henan Province, China
 Tel: 0086-371-63758707 Fax: 0086-371-63720313
 Email: toperkey@hi-toper.com

Building materials Rotary Dryer Technical parameters:

Specification	Shell diameter	Shell length	Shell obliquity	Motor power	Highest inlet air temperature	Shell Speed	Capacity	Weight
	(m)	(m)	(%)	(KW)	(°C)	(r/min)	(t/h)	(t)
Ø1.5×12	1.5	12	5	18.5	700	5	2.7-17	17
Ø1.5×15	1.5	15	5	22	700	5	2.7-17	18.9
Ø2.2×12	2.2	12	5	22	700	4.76	5.7-31	31.7
Ø2.2×14	2.2	14	5	22	700	4.76	5.7-31	33.5
Ø2.4×18	2.4	18	5	30	700	4	8-51	43
Ø3×20	3	20	3	50	700	3	11-80	76

Sand production line

